



RIGBRS

Luoyang BRS Bearing Co.,Ltd

2-1409, Wanguoyinzuo, Anhui Road
Luoyang 471003 China
TEL(86)379-64850388
FAX(86)379-64850788

MT Series Slewing Ring Bearings - MTO non-geared

Introduction

MT Series slewing ring bearings have a rectangular cross-section and range in size from 100 - 1200mm OD. They provide optimal economy and capacity for a given envelope dimension.

Design Features

The internal configuration consists of deep groove gothic arch raceways and maximum ball complement. This results in a four-point contact design which provides exceptional moment, thrust, and radial load capacities. Integral face riding seals for the larger sizes and non-contact shields for the smaller assist in the exclusion of contaminants. These features make them an ideal choice for a wide range of applications from light to heavy duty. MT Series bearings are offered in non-geared (MTO) and externally geared (MTE) configurations.

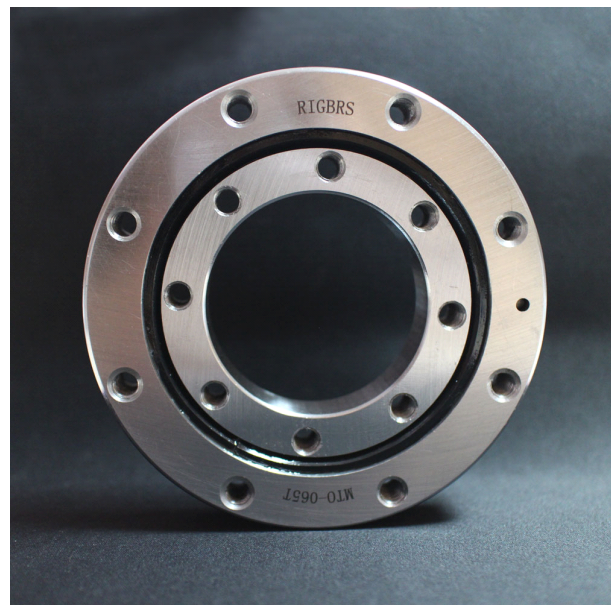
Applications:

The smaller sizes are well suited for:

- Manipulators
- Jib cranes
- Lift-assist devices
- Work positioners

Larger sizes are well suited for:

- Truck-mounted cranes
- Aerial lifts
- Hoists
- Small wind turbines
- Non-precision positioning tables



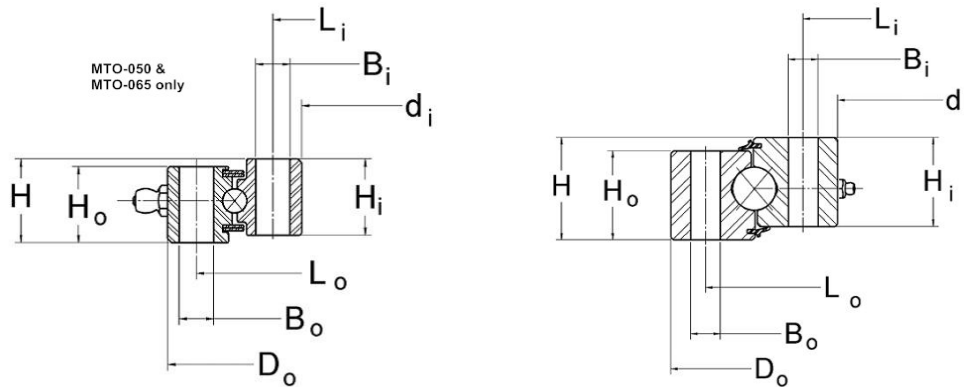


RIGBRS

Luoyang BRS Bearing Co.,Ltd

2-1409, Wanguoyinzuo, Anhui Road
 Luoyang 471003 China
 TEL(86)379-64850388
 FAX(86)379-64850788

MTO Four Point Contact Ball Slewing Bearing Non-geared Type



Model	Dimensions			Mounting Holes				Approx
	d _i	D _o	H	L _i	n _i - B _i	L _o	n _o - B _o	Weight
	(mm)	(mm)	(mm)	(mm)	(mm)	(mm)	(mm)	(kg)
MTO-050	50	110	20	63	8-φ6.6	97	8-φ6.6	0.9
MTO-050T	50	110	20	63	8-M6	97	8-M6	0.9
MTO-065	65	135	22	80	8-φ9	120	8-φ9	1.8
MTO-065T	65	135	22	80	8-M8	120	8-M8	1.8
MTO-122	122	226	34	140	12-φ9	208	12-φ9	6
MTO-122T	122	226	34	140	12-M8	208	12-M8	6
MTO-143	143	249	34	165	12-φ11	227	12-φ11	6.8
MTO-143T	143	249	34	165	12-M10	227	12-M10	6.8
MTO-145	145	300	50	175	16-φ14.3	270	16-φ14.3	16.8
MTO-145T	145	300	50	175	16-φ15.875	270	16-φ15.875	16.8
MTO-145X	145	312	50	175	16-φ15.1	270	16-φ15.1	18.6
MTO-170	170	310	46	200	12-φ13	280	12-φ13	15
MTO-170T	170	310	46	200	12-M12	280	12-M12	15
MTO-210	210	365	40	240	20-φ14.3	335	16-φ14.3	17.2
MTO-210T	210	365	40	240	20-φ15.875	335	16-φ15.875	17.2
MTO-210X	210	373	50	240	20-φ15.1	335	16-φ15.1	21.8
MTO-265	265	420	50	295	24-φ14.3	390	18-φ14.3	24.5
MTO-265T	265	420	50	295	24-φ15.875	390	18-φ15.875	24.5
MTO-265X	265	434	50	295	24-φ15.1	390	18-φ15.1	27.7

*Part numbers ending in an "X" suffix provide additional load capacity.