



RIGBRS

Luoyang BRS Bearing Co.,Ltd

2-1209, Wanguoyinzuo, Anhui Road
Luoyang 471003 China
TEL(86)379-64850388
FAX(86)379-64850788

CRBH Series Crossed Roller Bearing - Integrated Inner/Outer ring, Slim type

Introduction:

CRBH Series crossed roller bearings range in size 36 - 310mm OD. They provide optimal economy and capacity for a given envelope dimension.

Design:

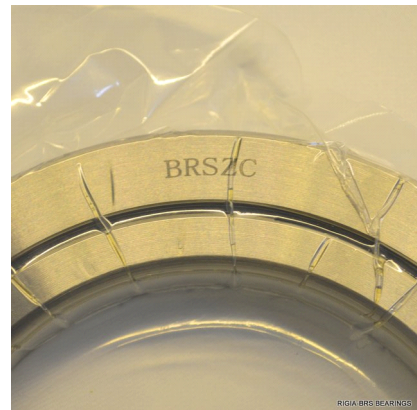
CRBH Series crossed roller bearings have integrated inner/outer ring, which provides high rigidity and running accuracy during rotation, suitable for rotating both inner ring and outer ring. Besides, CRBH series slewing bearing is with separators, ensures bearings' smooth rotation. Housing or fixing plate will be needed during installation.

Features:

- High rigidity and loading capacity, can take axial & radial loads.
- Stable rotation accuracy and torque.
- Thin section, space saving.

Applications:

- Industrial robot joints,
- Precision Turntable
- Rotation part of Machine tools
- Inspection instrument, Medical equipment
- Communication and radar facilities

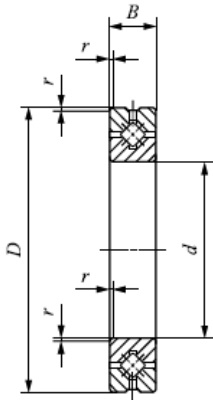




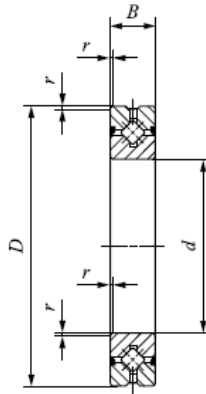
RIGBRS

Luoyang BRS Bearing Co.,Ltd

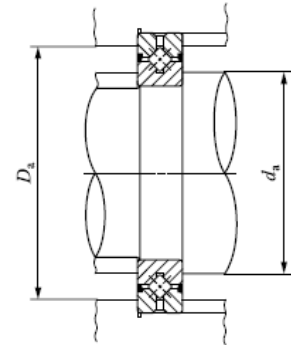
2-1209, Wanguoyinzuo, Anhui Road
 Luoyang 471003 China
 TEL(86)379-64850388
 FAX(86)379-64850788



CRBH...A



CRBH...AUU



Part No.		Dimension (mm)			Mounting (mm)		Load Rating (kN)		Weight
Open Type	Sealed Type	d	D	B	d _a	D _a	C	C ₀	kg
CRBH 208 A	CRBH 208 A UU	20	36	8	24	31	2.91	2.43	0.04
CRBH 258 A	CRBH 258 A UU	25	41	8	29	36	3.12	2.81	0.05
CRBH 3010 A	CRBH 3010 A UU	30	55	10	36.5	48.5	7.6	8.37	0.12
CRBH 3510 A	CRBH 3510 A UU	35	60	10	41.5	53.5	7.9	9.13	0.13
CRBH 4010 A	CRBH 4010 A UU	40	65	10	46.5	58.5	8.61	10.6	0.15
CRBH 4510 A	CRBH 4510 A UU	45	70	10	51.5	63.5	8.86	11.3	0.16
CRBH 5013 A	CRBH 5013 A UU	50	80	13	56	74	17.3	20.9	0.29
CRBH 6013 A	CRBH 6013 A UU	60	90	13	66	84	18.8	24.3	0.33
CRBH 7013 A	CRBH 7013 A UU	70	100	13	76	94	20.1	27.7	0.38
CRBH 8016 A	CRBH 8016 A UU	80	120	16	88	112	32.1	43.4	0.74
CRBH 9016 A	CRBH 9016 A UU	90	130	16	98	122	33.1	46.8	0.81
CRBH 10020 A	CRBH 10020 A UU	100	150	20	110	140	50.9	72.2	1.45
CRBH 11020 A	CRBH 11020 A UU	110	160	20	120	150	52.4	77.4	1.56
CRBH 12025 A	CRBH 12025 A UU	120	180	25	132	168	73.4	108	2.62
CRBH 13025 A	CRBH 13025 A UU	130	190	25	142	178	75.9	115	2.82
CRBH 14025 A	CRBH 14025 A UU	140	200	25	152	188	81.9	130	2.96
CRBH 15025 A	CRBH 15025 A UU	150	210	25	162	198	84.3	138	3.16
CRBH 20025 A	CRBH 20025 A UU	200	260	25	212	248	92.3	169	4.0
CRBH 25025 A	CRBH 25025 A UU	250	310	25	262	298	102	207	4.97



RIGBRS

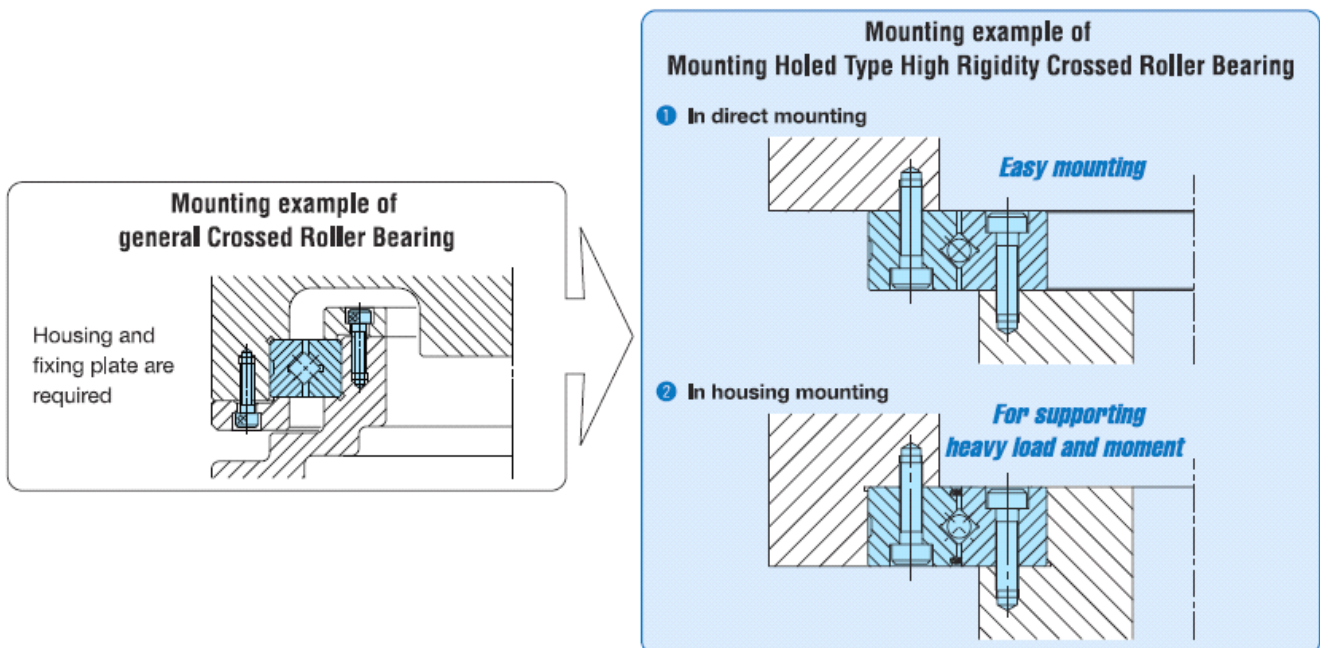
Luoyang BRS Bearing Co.,Ltd

2-1209, Wanguoyinzuo, Anhui Road
Luoyang 471003 China
TEL(86)379-64850388
FAX(86)379-64850788

Lubrication

Bearings have been filled with complex lithium grease before delivery, so they can be immediately put into application under normal working conditions, without extra lubrication during operating. At the initial stage of running, bearings' friction torque will increase temporarily, and will become stable along with running, after grease evenly coated the raceway and rollers.

Mounting Method



1. Before installation, please clean bearing bracket, shaft, or other components, make sure there is no burrs or rough edge.
2. The inner and outer rings should be securely fixed in the axial direction by using fixing plates, etc. Recommended thickness of the fixing plate is 1/2 or more of the bearing width. The dimensions in axial direction of the housing bore and the fixing plates should be decided to get a secure fixing while considering the actual dimension of bearing width which is zero/minus-tolerance.
3. The depth of the housing bore is recommended to be the same to or larger than the bearing width.
4. High rigidity crossed roller bearing has a plug for hole for inserting cylindrical rollers. When mounting the bearings, locate the plug at a position that is not included in the maximum loading zone. The plug location can be found by the pin that is at the side of the outer ring.



RIGBRS

Luoyang BRS Bearing Co.,Ltd

2-1209, Wanguoyinzuo, Anhui Road
Luoyang 471003 China
TEL(86)379-64850388
FAX(86)379-64850788

Cautions

- ◆ Bearings have been adjusted to preload and filled with lubricant before delivery, users shall not disassemble or attempt to clean bearings before installation. Please contact our after-sales staff for any problem during installation or application.
- ◆ Normal operating temperature of the bearing is $-20^{\circ}\text{C} \sim +80^{\circ}\text{C}$, please contact our technicians if it's over this temperature range.
- ◆ Bearing components material can choose aluminium alloy or cast iron.
- ◆ If you can not find suitable dimensions in the form, please contact our technicians, we can produce custom configurations.